

BUILDING TRADES
WALL FRAMING
Section 4: Advanced Layout of Walls--
Building a wall with openings

Names: _____

Foreman: _____

Due Date _____

COMPETENCIES :

Industrial Technology Construction (Senate file 449)

- Occupational 1
- Occupational 2
- Occupational 4

Scans Foundation Skills

- *F1 Reading*
- *F2 Writing*
- *F3 Arithmetic*
- *F9 Problem solving*
- F10 Mental visualization
- F5 Listening

ASSIGNMENT LANGUAGE:

- Size and location of studs and plates must be within 1/8 inch of indicated dimensions.
- The wall and corners must be square, straight, and plumb.
- Students will observe all safety rules and regulations when working.

MATERIALS & EQUIPMENT:

- 2x4 lumber/studs
- 16d framing nails
- hammers
- power saws
- tape measures
- squares
- levels

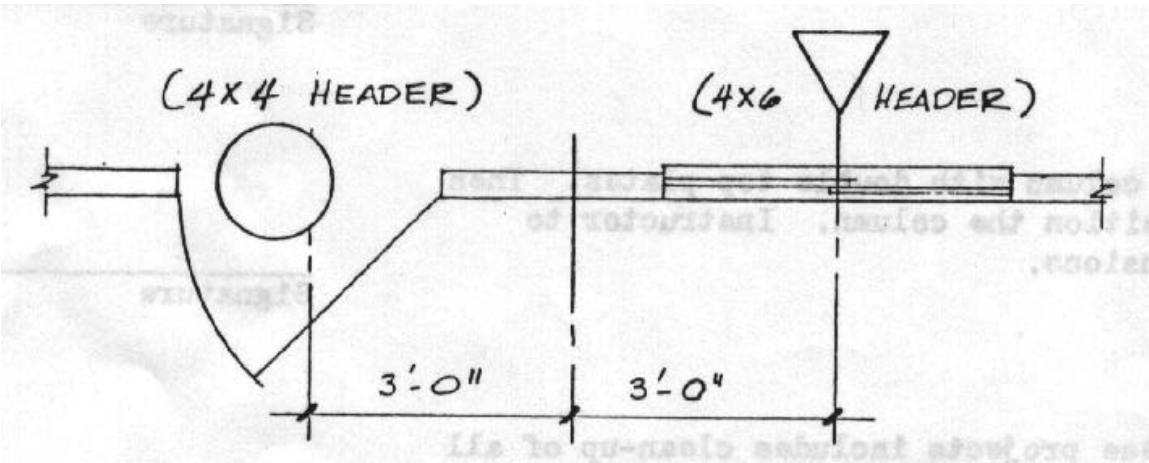
SAFETY CONSIDERATIONS:

- Safety Glasses and Personal Protective Equipment
- Power tool Safety rules
- Shop safety rules
- Lifting and Carrying considerations

ACTIVITY: Frame a section of wall as shown in the drawing. Your instructor will choose a door and window schedule for you or assign the same schedule as used in the previous assignment.

PROCEDURE:

<u>SCHEDULES</u>	
<u>DOOR</u>	<u>WINDOW</u>
① 3'0" X 6'8"	△ A 5'0" X 2'4"
② 2'0" X 6'8"	△ B 2'6" X 5'0"
③ 2'6" X 6'8"	△ C 4'0" X 1'6"
④ 2'4" X 6'8"	△ D 1'6" X 4'0"



EVALUATION:

Points	Tolerance	Square and Plumb	Nailing	Lab Conduct	Safety Procedures	Cleanup Practices	Wall Openings
4	<i>All lengths and locations within 1/8"</i>	<i>Wall is square and plumb</i>	<i>Correct number, size and positioning of all nails. No excess hammer marks or bent nails.</i>	<i>On task, professional, and contributes to group success</i>	<i>All safety procedures followed</i>	<i>Complete cleanup done promptly</i>	<i>Proper location and size of specified wall openings within 1/8" tolerance</i>
3	<i>Less than ___ measurements out of tolerance</i>	<i>Wall is square but not plumb or vice versa</i>	<i>Less than _____ nailing errors</i>	<i>Meets 2 of 3 criteria above</i>	<i>Less than 2 safety violations</i>	<i>Meets 1 of 2 criteria above</i>	<i>same as above within 1/4" tolerance</i>
2	<i>Less than ___ measurements out of tolerance</i>		<i>Less than _____ nailing errors</i>	<i>Meets 1 of 3 criteria above</i>	<i>Greater than 2 safety violations</i>		<i>same as above within 3/8" tolerance</i>
0	<i>___ or more measurements out of tolerance</i>	<i>Wall is neither square nor plumb</i>	<i>More than _____ nailing errors</i>	<i>Meets 0 of 3 criteria above</i>	<i>Intentional safety violations</i>	<i>Cleanup unacceptable</i>	<i>beyond the 3/8" tolerances</i>