

# Season at a Glance

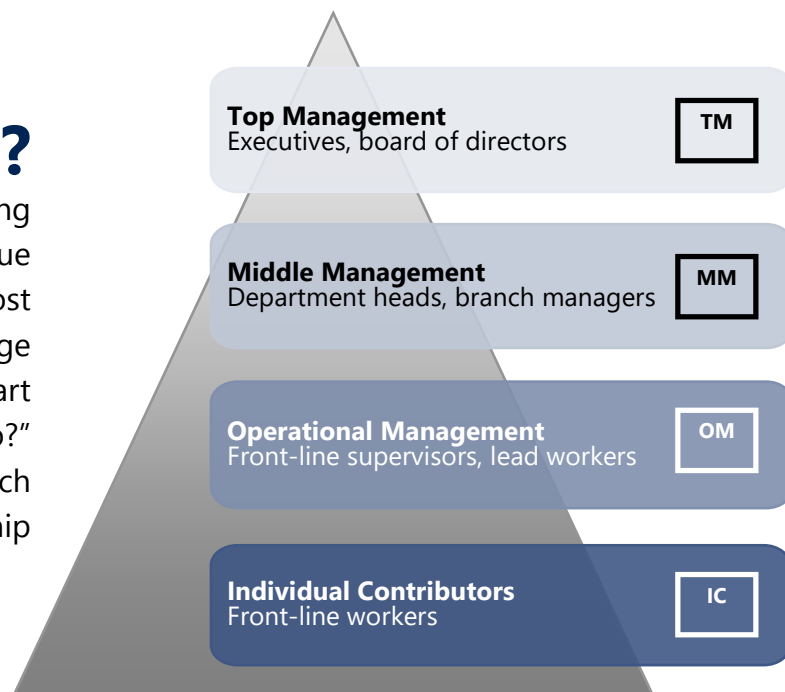
## NIACC Business Partnership 2021-2022



Course Title/Speaker	Who?	Day	Dates	Time	View Options	Course
<b>Common Ground: Understanding the Generational Mix on Today's Team</b> <i>Speaker: Celina Peerman</i>	TM	TUES	10/12/21	9am-12pm	Face-to-Face Location: NC180	<b>10248</b> <i>info on pg. 6</i>
	MM					
	OM	TUES	10/12/21	1-3:30pm	Zoom	<b>10249</b> <i>info on pg. 6</i>
	IC					
<b>Creating a Drama Free Workplace</b> <i>Speaker: Lisa Shaffer</i>	MM	TUES	10/26/21	9-11:30am	Face-to-Face Location: NC180	<b>10250</b> <i>info on pg. 7</i>
	OM	WED	11/03/21	1-3:30pm	Zoom	<b>10251</b> <i>info on pg. 7</i>
<b>The Leader's Edge: Three Skills to Avoid Chaos, Complacency, and Lost Talent</b> <i>Speaker: Liz Uram</i>	TM	WED	11/10/21	9-11:30am	Face-to-Face Location: NC180	<b>10252</b> <i>info on pg. 8</i>
	MM					
	OM	WED	11/17/21	1-3:30pm	Zoom	<b>10253</b> <i>info on pg. 8</i>
<b>Supercharge Your Productivity: Managing Your Energy Not Your Time</b> <i>Speaker: Karen McCullough</i>	TM	THURS	12/16/21	9-11:30am	Zoom	<b>10254</b> <i>info on pg. 9</i>
	MM					
	OM					
	IC					
<b>The Language of Retention: How to Recognize and Retain the "At-Risk"</b> <i>Speaker: Pamela Jett</i>	TM	THURS	01/13/22	9-11:30am	Zoom	<b>10255</b> <i>info on pg. 10</i>
	MM					
	OM					
<b>Taming the Email Beast: Key Strategies for Managing Email Overload</b> <i>Speaker: Randy Dean</i>	TM	TUES	01/25/22	1-3:30pm	Zoom	<b>10256</b> <i>info on pg. 11</i>
	MM					
	OM					

# Who should attend?

While the Business Partnership offers something for everyone, each class is tailored to a unique audience. To ensure our members get the most out of each Partnership course, we encourage employers to use the organization structure chart to the right - in combination with the "Who?" column for each course - in selecting which employees to send to individual Partnership classes.



## NIACC Business Partnership 2021-2022

Course Title/Speaker	Who?	Day	Dates	Time	View Options	Course
<b>The Spectrum of Awesome: Stress Less for Success</b> <i>Speaker: Kristen Brown</i>	MM OM	WED	02/09/22	9-11:30am	Zoom	<b>10257</b> <i>info on pg. 12</i>
<b>The Story-Driven Leader</b> <i>Speaker: Kelly Swanson</i>	TM MM OM IC	FRI	02/25/22	9am-12pm	Face-to-Face Location: NC180	<b>10265</b> <i>info on pg. 13</i>
<b>Championship Leadership: Creating a Culture of Mentorship</b> <i>Speaker: Nate Bailey</i>	TM MM OM	WED	03/23/22	9am-12pm	Face-to-Face Location: NC180	<b>10259</b> <i>info on pg. 14</i>
		WED	03/30/22	1-3:30pm	Zoom	<b>10260</b> <i>info on pg. 14</i>
<b>Emotional Intelligence in the Workplace: Discover Your Inner Resources</b> <i>Speaker: Juli Burney</i>	TM MM OM IC	TUES	04/12/22	9am-12pm	Face-to-Face Location: NC180	<b>10261</b> <i>info on pg. 15</i>
		TUES	04/19/22	1-3:30pm	Zoom	<b>10262</b> <i>info on pg. 15</i>
<b>Financial Statements for Non-Financial Staff</b> <i>Speaker: Jim Lindell</i>	MM OM IC	THURS	05/12/22	9am-12pm	Face-to-Face Location: NC180	<b>10263</b> <i>info on pg. 16</i>
		THURS	05/19/22	1-3:30pm	Zoom	<b>10264</b> <i>info on pg. 16</i>